

**Engineering and supply of industrial
equipment**

هندسة وتوريد المعدات الصناعية

ABIPI

COMPANY PROFILE

COMPANY INFO

Company Contacts:

- Name: ABIPI FZC LLC
- Website: www.abinvest.ae
- email: office@abinvest.ae
- Tel: +971 4 559 4771
- P.O. Box 214 950

Direct contact & WhatsApp:

- +971 50 385 3900

Office Locations:

- Ajman: Office BLA SPR2-62, AMC - BOULEVARD-A BUILDING, Ajman, UAE
- Dubai: Office 2902-45B, Tameem House Building, Dubai, UAE

ABIPI

Engineering and supply of industrial equipment

هندسة وتوريد المعدات الصناعية

www.abinvest.ae



Providing engineering solutions of any kind, from start to finish.



From design to implementation - with ABIPI you won't go astray.



Our Practice Areas



Pump stations manufacturing

For all industries, based on any pumps

Software for industrial systems

SCADA systems, mobile applications, etc.

Engineering services

Technical consulting, optimization of design solutions, technical supervision

Automated process control systems manufacturing

Make your equipment more efficient and minimize downtime and equipment breakdowns

Production of deferrization stations

Full automation of all station processes, high space-saving, modern design

Technological line building

For various food industries: confectionery factories, butter factories, canneries, fish factories, etc.

PUMP STATIONS MANUFACTURING

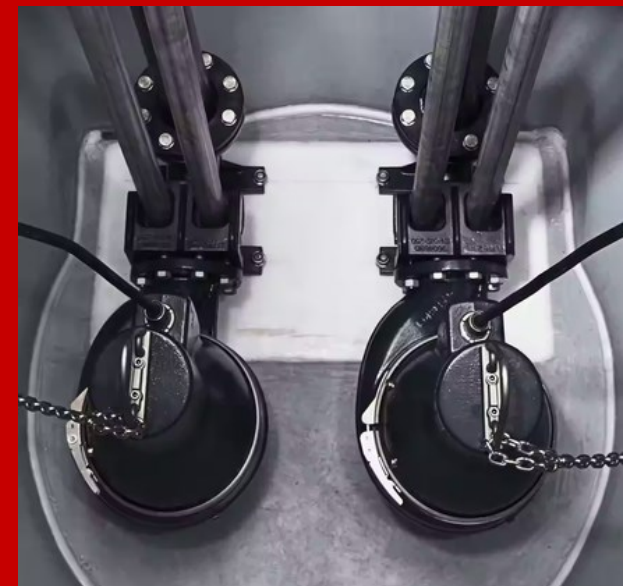
ABIPI FZC LLC designs energy efficient pumping stations for the following types of industries:

- food and light industry;
- water supply and wastewater disposal;
- pharmaceutical industry;
- petrochemical industry;
- petroleum refineries;
- paint and varnish industry;
- mining.

All materials and components as well as software of the Pump Stations are tested for compliance with the requirements of standards, specifications and have certificates of quality and conformity.



The control and automation system of the pump unit can be designed according to the customer's requirements from a simple control panel to complete equipment based on any necessary controllers

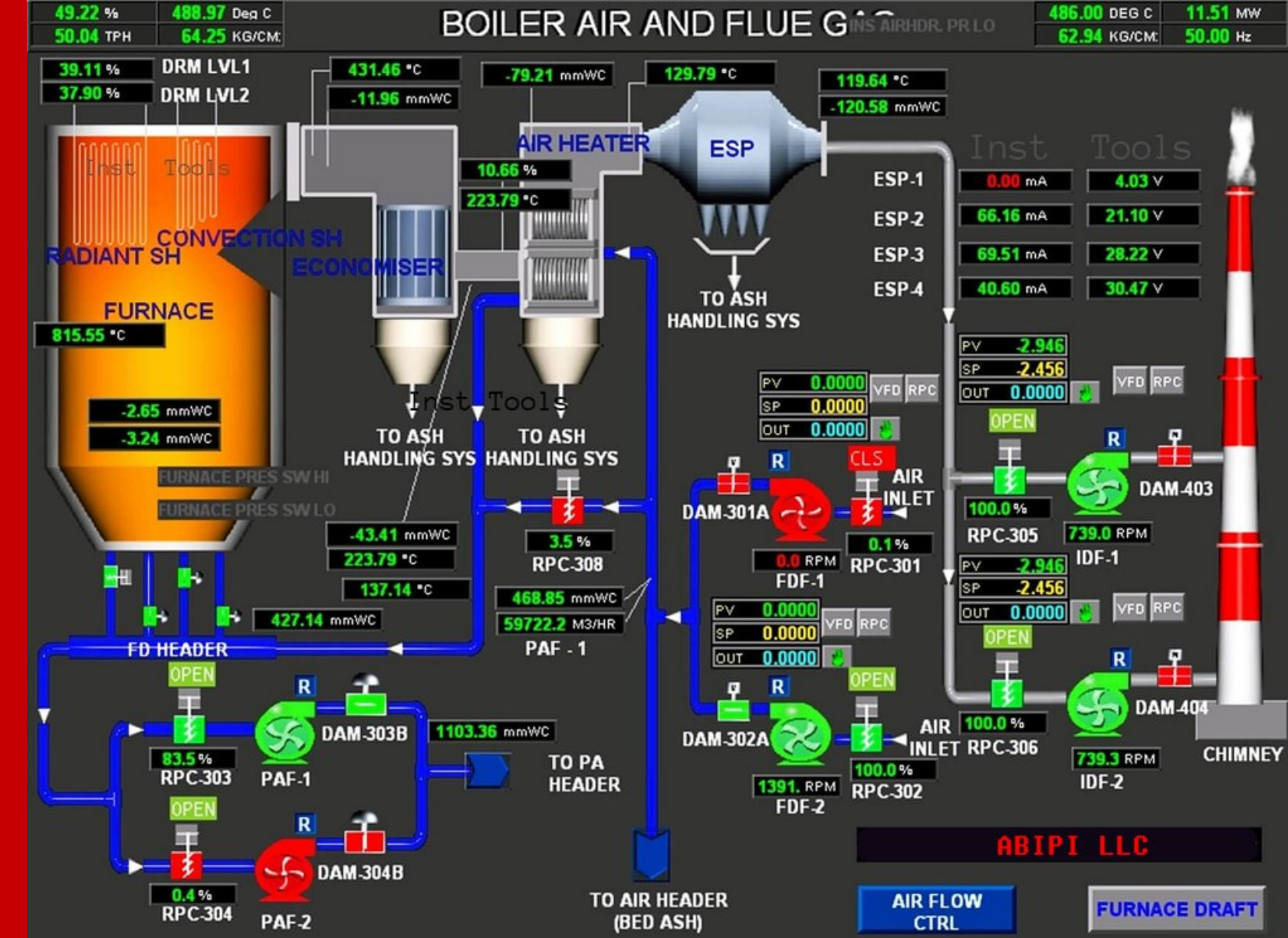


SOFTWARE FOR INDUSTRIAL SYSTEMS

ABIPI develops and implements software for the power industry, industrial enterprises, and the public sector. Leading technologies and programming languages are used for informatization purposes.

ABIPI's turnkey **SCADA systems** will allow operators to monitor all system processes and events. The designed systems have user-friendly interface, which makes it easy and fast to get the skills to work with it. Our SCADA systems are able to work fully with controllers of different brands using different communication protocols as well as via OPC-standard.

Also ABIPI offers **software and application development** for your customized SCADA and HMI systems.



ABIPI designs custom, non-standard solutions that have specific customer requirements and wishes.



ENGINEERING SERVICES

ABIPI specialists deal with design management of construction of treatment facilities, water intake and water treatment stations, booster pump stations, technological lines. Our qualified engineers are able to implement the set task in a quality and prompt manner.

Engineering services from ABIPI is:

- pre-project customer support on legal and technical issues of future construction;
- effective planning of design solutions development and their approval by the state authorities;
- participation in the choice of contractor;
- technical supervision over the construction and timing.
- control over the expenditure of funds;
- participation in the commissioning of the facility.



We offer engineering services to solve problems of any complexity.



AUTOMATED PROCESS CONTROL SYSTEMS MANUFACTURING

Our company specializes in the development of automated process control systems of any complexity. Before proceeding to the development of an automatic control system, specialists will conduct a study of the object, to take into account all its features.

The use of ABIPI APCS systems will help:

- to make the operation of equipment more efficient;
- minimize downtime and equipment failures;
- achieve more convenient management of the necessary processes provided by a particular technology;
- to control and monitor process parameters;
- to remove the mistakes made due to human factor when controlling.



Modern approach, the latest design tools and cohesive team of professionals



PRODUCTION OF DEFERRIZATION STATIONS

ABIPI modular deferrization stations is:

- full automation of all technological processes of the station;
- high compactness;
- electric lighting, electric heating, supply and exhaust ventilation systems, etc. are provided;
- modern appearance and design.

Modular water deferrization stations are transportable containers consisting of 1 – 10 modules, which are connected at the place of location into a single unit.

We guarantee the manufacture of equipment in parallel with the development of design and estimate documentation in the shortest possible time.



Quality of equipment is guaranteed by quality management system confirmed by certificates of compliance with the requirements of ISO 9001, issued by the international certification body Bureau Veritas.



TECHNOLOGICAL LINE BUILDING

ABIPI FZC LLC manufactures to order automatic production lines for various food industries: confectionery factories, butter factories, canneries, fish factories, bakeries, etc.

In the design of technological lines of all kinds of production, including dangerous, our company takes into account such features of equipment, as:

- range of parameters used in control (pressure, temperature and others);
- performance;
- corrosion resistance;
- fail-safe and reliable operation;
- modular principle of manufacturing and installation;
- flexibility in changing technological schemes, the possibility of reconstruction;
- payback period.

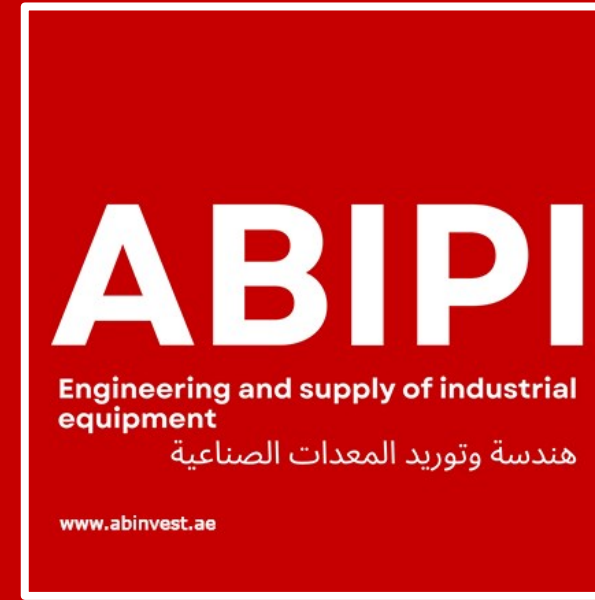


All works on design, manufacturing, installation, installation and commissioning or reconstruction of facilities with technological lines must be carried out by organizations licensed to work and supervise in this area.



CONTACT DETAILS

We will solve many production problems to make your work smooth and comfortable.



EMAIL

office@abinvest.ae



PHONE

[+971 50 385 3900](tel:+971503853900)
[+971 4 559 4771](tel:+97145594771)



WEBSITE

www.abinvest.ae

ENGINEERING
SERVICES

ABIPi